

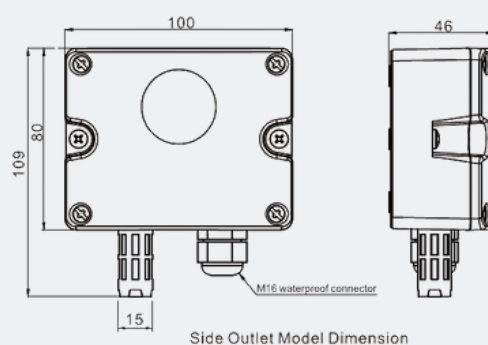
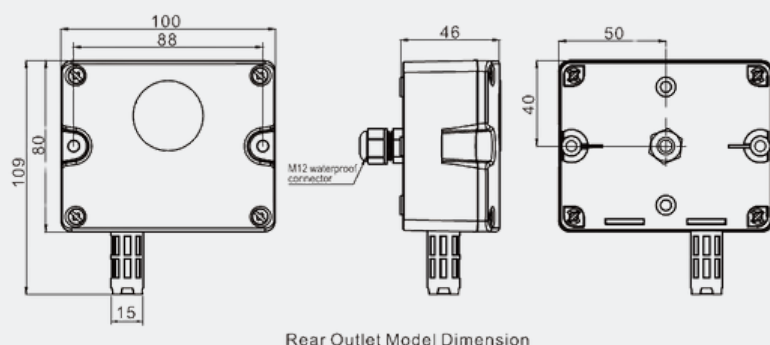
## Overview

The **TxCDW33** uses advanced NDIR (Non-Dispersive Infrared) technology to measure CO<sub>2</sub> concentration by detecting infrared light absorption. Compared to electrochemical sensors, it offers longer lifespan, higher stability, and better accuracy

## Features

- High Accuracy - Temperature-compensated for precise readings
- Long-Lasting Performance - Oxygen-independent with extended lifespan
- Advanced NDIR Technology - Dual-channel infrared detection
- Weatherproof Design - Double-layer waterproof membrane prevents condensation
- Smart Connectivity - RS485 with manual address DIP switch configuration

## DIMENSIONS AND WIRING



## TxCDW33

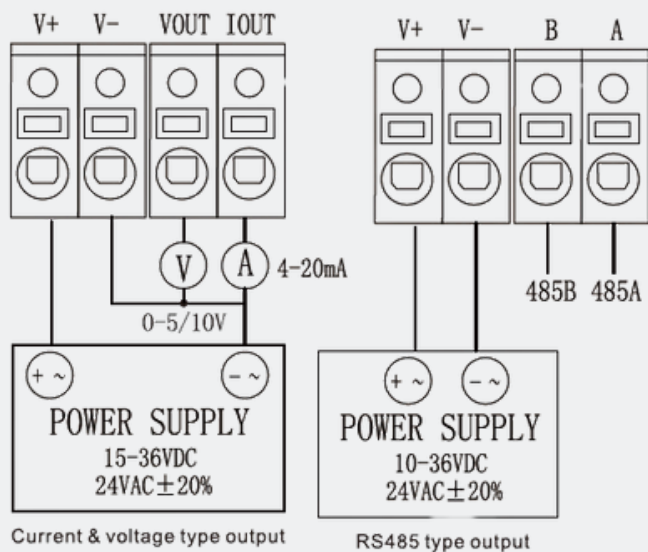
### Wall-mounted Carbon Dioxide Sensor



## Applications

- Indoor air quality monitoring
- HVAC and ventilation systems
- Air purifiers and smart home devices
- Agricultural greenhouses and grow rooms

Selection terminal outlet:



Selection direct outlet:

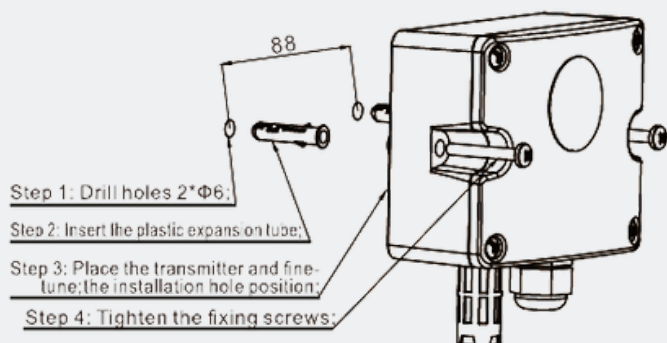
Harness color	Current & voltage type output	RS485 Type Output
Red	V+	V+
Black	V-	V-
White	Iout	B
Green	Vout	A

## Specifications

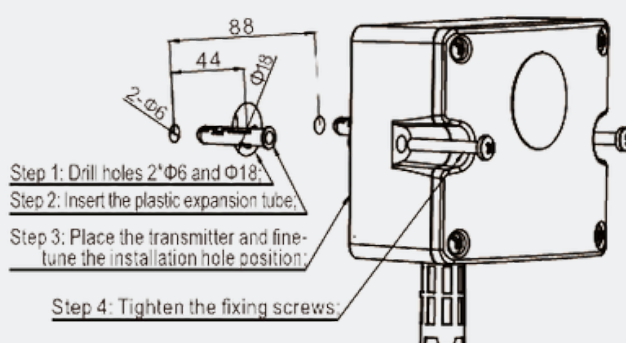
### Wall-mounted Carbon Dioxide Sensor

Sensor	Dual-channel infrared carbon dioxide sensor		
Sensor life	> 5 Years		
Range	0~2000ppm、0~5000ppm、0~10000ppm		
Accuracy	±(40+3%FS)ppm @25°C		
Preheating time	2min(available)-10min(maximum accuracy)		
Response Time (T <sub>90</sub> )	T90<120s		
Output signal	4~20mA&0~10V	4~20mA&0~5V	RS485
Power supply voltage	15~36VDC/24VAC±20%		10~36VDC/24VAC±20%
Work environment	-10-50°C 80-90% RH (no condensation)		
Storage environment	-20-60°C 80-90% RH (no condensation)		
Net weight	I&V:166.9g RS485:168.7g		
Levels of protection	IP65		
Material	Shell:PC; Probe case:PE		

## Installation



Side Outlet Model Installation



Rear Outlet Model Installation

## Selection Code:

### Code and description

TxCDW33

Wall-mounted Carbon Dioxide Sensor

2

2000ppm

5

5000ppm

8

10000ppm

AV5

4-20mA & 0~5V

AV10

4-20mA & 0~10V

RS

RS485Modbus

S

Side outlet

R

Rear outlet

T

Terminal outlet

D

Direct outlet

Remark

Model

Range

Output

Cable Outlet

Outlet Form