

Overview

The **TxCDI35** measures CO₂ concentration using NDIR (Non-Dispersive Infrared) technology, which detects gas levels based on infrared light absorption. This method ensures long life, stability, and high accuracy compared to electrochemical sensors. Featuring an imported high-performance NDIR sensor, it offers fast response, reliable performance, and a compact design for easy installation

Features

- High-performance imported NDIR sensor
- Sleek, lightweight design with backlit LCD display
- Long-term stability featuring ABC self-calibration
- Multiple output options; standard 86-box mounting

TxCDI35

Room Carbon Dioxide Sensor

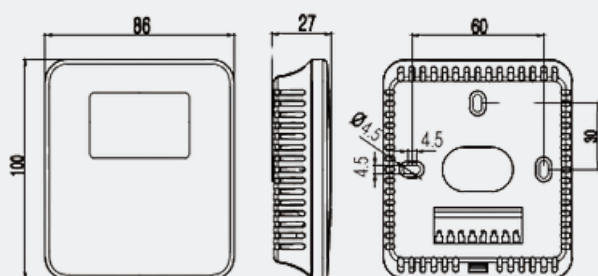


Applications

- Homes and offices
- Factory floors
- Libraries and warehouses

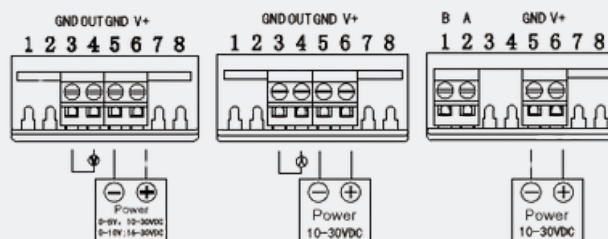
DIMENSIONS AND WIRING

① Dimension (mm)



② Wiring Method

Depending on the selection, the following diagram shows voltage output and current output respectively, RS485 output wiring:



Specifications

Room Carbon Dioxide Sensor

Sensor	NDIR sensor with ABC self-calibration			
Sensor life	>5 years			
Range	0-2000ppm/0-5000ppm			
Accuracy	$\pm(40\text{ppm} + 3\%\text{MV})\text{ppm}$			
Average Current	<45mA			
Response Time (T ₉₀)	2min			
Output signal	4~20mA(3-wire)	0~5V(3-wire)	0~10V(3-wire)	RS485(4-wire)
Working Voltage	10-30Vdc	10-30Vdc	16-30Vdc	10-30Vdc
Working Temperature	0~50°C			
Working Humidity	0-85%RH(no condensation)			
Levels of protection	IP30			

Wiring Instructions

1. Open the Sensor Cover

- Press the release button located under the back cover to open the device (refer to Figures 1 & 2).

2. Connect Wiring

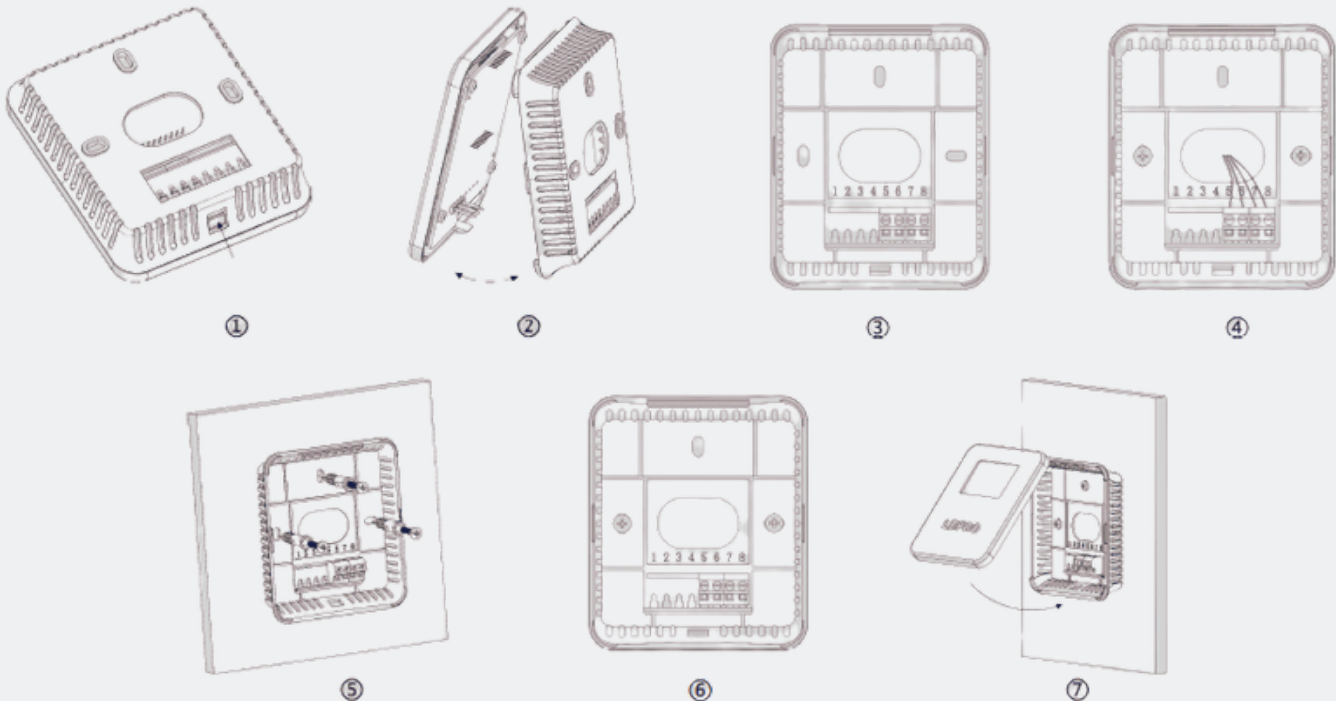
- Make electrical connections as per the wiring diagram.
- Route the cable through the designated cable entry hole (Figure 4).

3. Mount the Sensor

- Use the three mounting holes on the rear cover to secure it to the wall with expansion screws (Figure 5).
- Alternatively, mount directly onto pre-installed 86 junction boxes using screws (Figure 6).

4. Secure the Cover

- Align and snap the front cover onto the base to finalize installation (Figure 7).



Selection Code:

Code and description		Remark
TxCDI35	Room Carbon Dioxide Sensor	Model
2	2000ppm	Range
5	5000ppm	
V5	0~5V	Output
V10	0~10V	
A	4-20mA	
RS	RS485Modbus	
1	Without Display	Display
2	With Display	